

DERYN CULLEN

**PAIRING POSITIONS
FOURTH AND SEVENTH POSITIONS**

EXERCISES

© 2012 D C Cello Studio

Pairing Positions

1. Fourth Position D String & Seventh Position A String

Fourth Position - D String

Seventh Position - A String



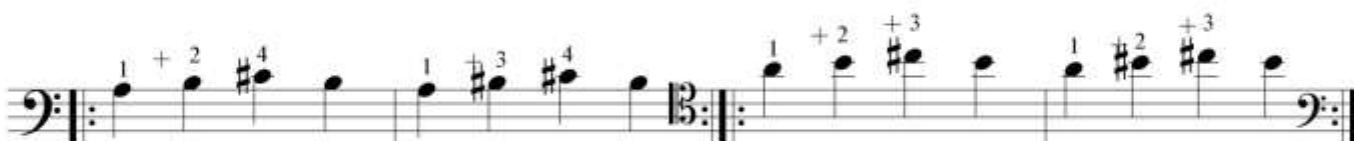
Fourth Position (Backward Stretch) - D String

Seventh Position (Backward Stretch) - A String



Fourth Position (Forward Stretch) - D String

Seventh Position (Forward Stretch) - A String



Upper Fourth Position - D String

(Enharmonic Equivalent)



Upper Seventh Position - A String

(Enharmonic Equivalent)



Pairing Positions

2. Fourth Position G String & Seventh Position D String

Fourth Position - G String

Seventh Position - D String

Musical notation for the first pair of positions. The G string part (left) is in 4/4 time, starting with a double bar line and repeat sign. It shows notes G2, A2, B2, C3 with fingerings 1, 3, 4, 2. The D string part (right) is in 3/4 time, starting with a double bar line and repeat sign. It shows notes D2, E2, F2, G2 with fingerings 1, +2, 3, 1, 2, +3.

Fourth Position (Backward Stretch) - G String

Seventh Position (Backward Stretch) - D String

Musical notation for the second pair of positions. The G string part (left) is in 4/4 time, starting with a double bar line and repeat sign. It shows notes G2, F2, E2, D2 with fingerings 1, +2, 4, 1, +3, 4. The D string part (right) is in 3/4 time, starting with a double bar line and repeat sign. It shows notes D2, C2, B1, A1 with fingerings 1, +2, +3, 1, +2, +3.

Fourth Position (Forward Stretch) - G String

Seventh Position (Forward Stretch) - D String

Musical notation for the third pair of positions. The G string part (left) is in 4/4 time, starting with a double bar line and repeat sign. It shows notes G2, A2, B2, C3 with fingerings 1, +2, #4, 1, #3, #4. The D string part (right) is in 3/4 time, starting with a double bar line and repeat sign. It shows notes D2, E2, F2, G2 with fingerings 1, +2, +3, 1, +2, +3.

Upper Fourth Position - G String

(Enharmonic Equivalent)

Musical notation for the fourth pair of positions. The G string part (left) is in 4/4 time, starting with a double bar line and repeat sign. It shows notes G2, A2, B2, C3 with fingerings 1, 3, 4, 1, 2, 4. The D string part (right) is in 3/4 time, starting with a double bar line and repeat sign. It shows notes D2, E2, F2, G2 with fingerings 3, 4, 2, 4.

Upper Seventh Position - D String

(Enharmonic Equivalent)

Musical notation for the fifth pair of positions. The D string part (left) is in 3/4 time, starting with a double bar line and repeat sign. It shows notes D2, E2, F2, G2 with fingerings 1, +2, 3, 1, 2, +3. The D string part (right) is in 3/4 time, starting with a double bar line and repeat sign. It shows notes D2, E2, F2, G2 with fingerings 1, +2, 3, 1, 2, 3.

Pairing Positions

3. Fourth Position C String & Seventh Position G String

Fourth Position - C String

Seventh Position - G String

Two musical staves in 4/4 time. The first staff (C string) shows a sequence of notes: G2 (1), A2 (3), B2 (4), C3, D3, E3, F3, G3. The second staff (G string) shows: G2 (1), A2 (+2), B2 (b3), C3, D3, E3, F3, G3. Both staves have repeat signs at the end.

Fourth Position (Backward Stretch) - C String

Seventh Position (Backward Stretch) - G String

Two musical staves in 4/4 time. The first staff (C string) shows: G2 (1), F2 (+2), E2 (4), D2, C2, B1, A1, G1. The second staff (G string) shows: G2 (1), F2 (+2), E2 (+3), D2, C2, B1 (b), A1, G1. Both staves have repeat signs at the end.

Fourth Position (Forward Stretch) - C String

Seventh Position (Forward Stretch) - G String

Two musical staves in 4/4 time. The first staff (C string) shows: G2 (1), A2 (+2), B2 (4), C3, D3, E3, F3, G3. The second staff (G string) shows: G2 (1), A2 (+2), B2 (+3), C3, D3, E3, F3, G3. Both staves have repeat signs at the end.

Upper Fourth Position - C String

(Enharmonic Equivalent)

Two musical staves in 4/4 time. The first staff (C string) shows: G2 (1), A2 (3), B2 (4), C3, D3, E3, F3, G3. The second staff (G string) shows: G2 (1), A2 (2), B2 (4), C3, D3, E3, F3, G3. Both staves have repeat signs at the end.

Upper Seventh Position - G String

(Enharmonic Equivalent)

Two musical staves in 4/4 time. The first staff (G string) shows: G2 (1), A2 (+2), B2 (3), C3, D3, E3, F3, G3. The second staff (G string) shows: G2 (1), A2 (b2), B2 (b3), C3, D3, E3, F3, G3. Both staves have repeat signs at the end.